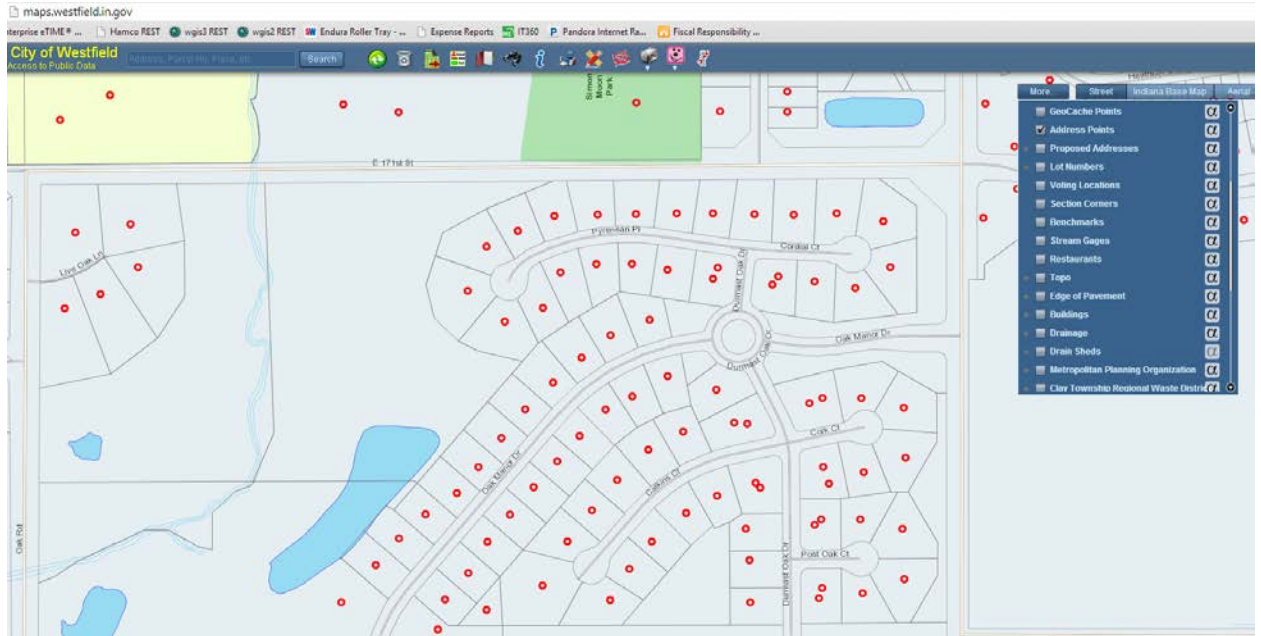
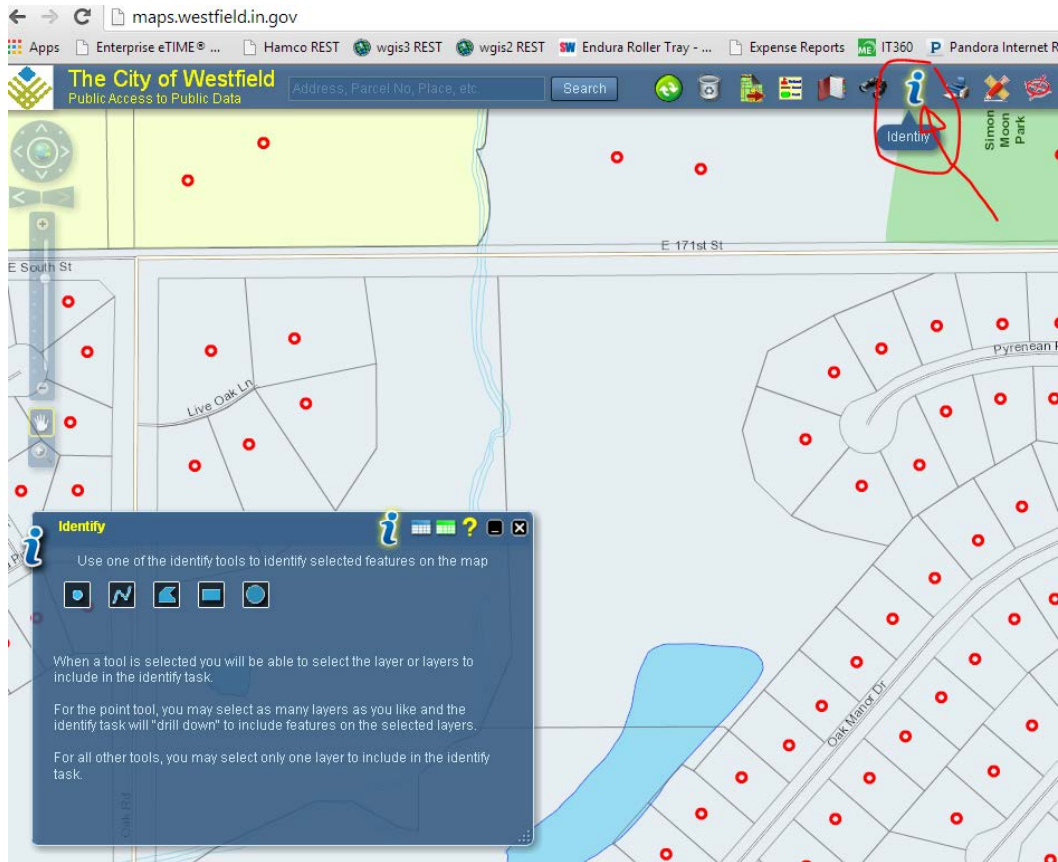


## How To make an address list using the flex map:

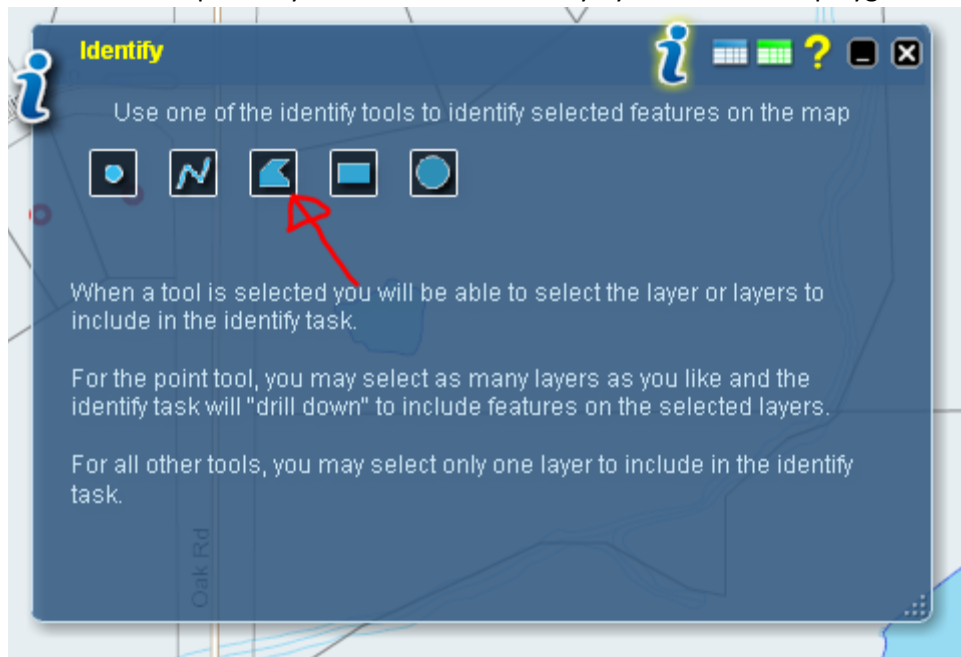
1. Go to [www.maps.westfield.in.gov](http://www.maps.westfield.in.gov)
2. Turn on the Address points – under more:



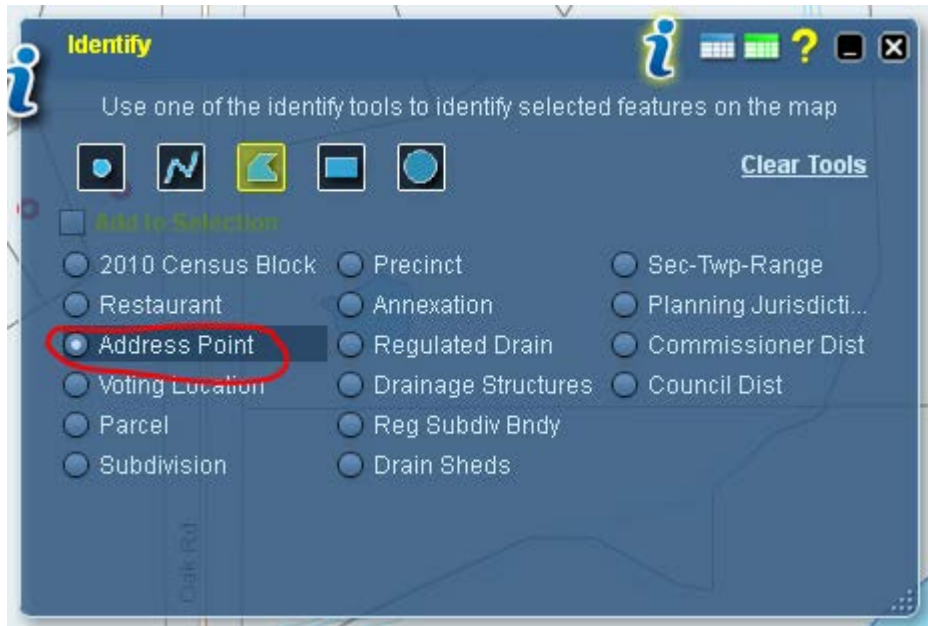
3. Click on the “identify” widget



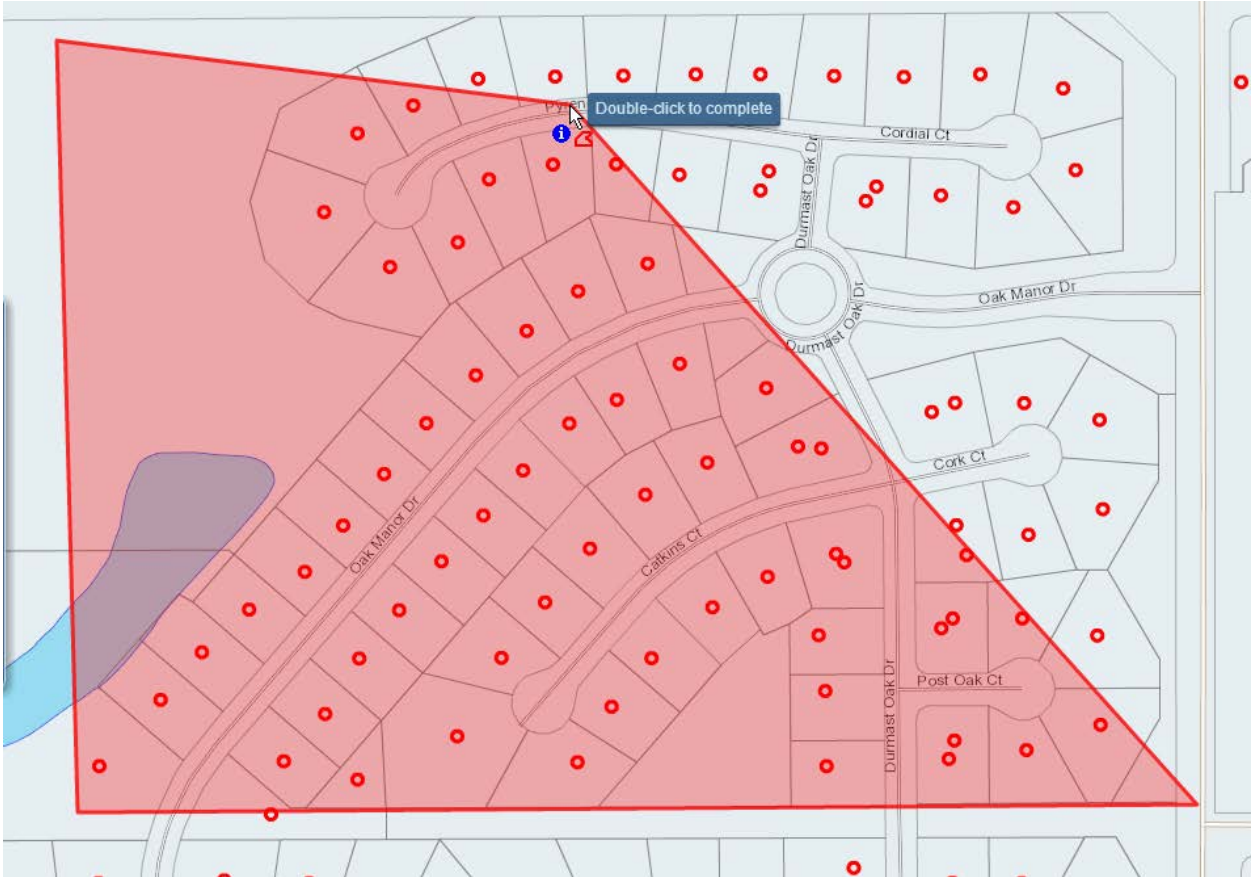
4. Choose the shape that you would like to identify by – in this case – polygon:



5. Choose Address points:



6. Then – click on the map to start drawing and double click to complete the polygon:



7. Click on the green – results grid and export to csv.



8. Save your file to a location and then open up excel. You can open up a .csv file in excel by changing the file type to "All".
- 1.