

WESTFIELD INDIANA

THE
FAMILY SPORTS CAPITAL
OF AMERICA

Family Sports Capital
Addendum II
to the Westfield – Washington
Township Comprehensive Plan

December 2010

City of
Westfield
Indiana 1834
Old Town Charm, New City Style

Introduction

This addendum (the “Addendum”) to the Westfield-Washington Township Comprehensive Plan (the “Comprehensive Plan”) is designed to support and facilitate implementation of the recommendations of the Westfield Sports Commission (the “Sports Commission”). The Commission has extensively studied possible locations for a regional/national intergenerational sports facility within the City of Westfield. The Commission has completed its analysis and recommends the location identified in Exhibit A. To the extent that the policies and recommendations set forth in this Addendum conflict with the recommendations of the Comprehensive Plan, this Addendum shall supersede the Comprehensive Plan and previously adopted addenda.

The Family Sports Capital of America Vision

The City of Westfield (the “City”) wishes to provide for the development of a regional/national championship quality sports facility within the Westfield community with a multigenerational focus. As a result, the City desires to amend its comprehensive plan to include guidance, as included below, for the Sports Campus.

- The Sports Campus should be designed to at least support Westfield youth and family sports
- The Sports Campus should be designed to accommodate at least the following: (1) field sports (including, but not limited to, soccer, lacrosse and rugby); (2) diamond sports (including, but not limited to, baseball and softball); and (3) and indoor winter sports facility (including, but not limited to, basketball, volleyball and gymnastics).
- The Sports Campus should include facilities to support the hosting of championship level amateur sports tournaments.
- In addition to the sports-related uses within the Sports Campus, it is anticipated that other related and supporting land uses will be located within, adjacent to and nearby the Sports Campus. Such land uses will likely include hotels, restaurants, healthcare and sports medicine facilities, professional offices, retail uses, higher density residential uses and other supporting commercial uses. It is contemplated that such other uses will be proposed and approved either in conjunction with the Sports Campus or after development of the Sports Campus has been initiated. The total additional land area to be utilized for such purposes will be many times the size of the Sports Campus as shown in Exhibit A attached hereto and made a part hereof. This area shall be referred to as the Family Sports Capital of America (the “Sports Capital”).

The Family Sports Capital of America Goals

The Sports Commission, in its report to the Mayor titled “Westfield Family Sports Complex, Phase I Report,” July 24, 2009 (the “Report I”), identifies the following goals for the Westfield community:

- Provide intergenerational health, recreation and sporting opportunities within the City and provide facilities for state, regional and national tournaments;
- Cooperate with the Hamilton County Convention and Visitor's Bureau (the "HCCVB") to make Westfield the "Family Sports Capital of America" – a regional and national destination for sporting events and tournaments for all ages; and
- Pursue economic development opportunities to capitalize on Westfield's already-developing intergenerational sports niche. Examples include: (1) multiple championship quality sports facilities; (2) complementary health, recreation and technology related land uses; (3) supporting entertainment, dining, lodging land uses; and (4) other uses which would support and compliment the Westfield intergenerational sports initiative.

Sports Commission Phase I Report

As the Sports Commission concludes in its Report I, creation and development of the Sports Campus is a viable endeavor for the City. The Sports Commission recommends that the City and HCCVB continue with planning efforts for such facilities. The Sports Commission plans to perform additional analyses as prompted by the City to further this effort as well.

Sports Commission Findings

- The City has a responsibility to provide appropriate facilities for Westfield youth and family sports. Currently, several youth sports are lacking adequate facilities, either because of growth or because currently utilized facilities may not be available in the long term. The City is collaborating with these youth programs to provide needed facilities.
- There is a market demand for championship level facilities to host amateur tournaments and championships and the Sports Campus can serve as a family sports destination. These tournaments and related revenue can help the City and Hamilton County fund youth sports in the community. If done in a fiscally responsible way, the City has an opportunity to turn what is traditionally regarded as a fixed City cost (youth sports facilities) into a revenue-generating economic development initiative.
- The City's central geographic location (accessibility by visitors), availability of land and existing athletics and sports focus complement the City's multigenerational sports concept. This concept aligns well with the economic development goals and objectives of the City as well.

Sports Commission Phase II Report

The Sports Commission, in its report titled “Westfield Family Sports Complex, Phase II Report,” September 28, 2010 (the “Report II”), further defines the scope of initial sports to be offered at the Sports Campus, and identifies the Commission’s preferred location for the Sports Capital.

Sports Commission Findings

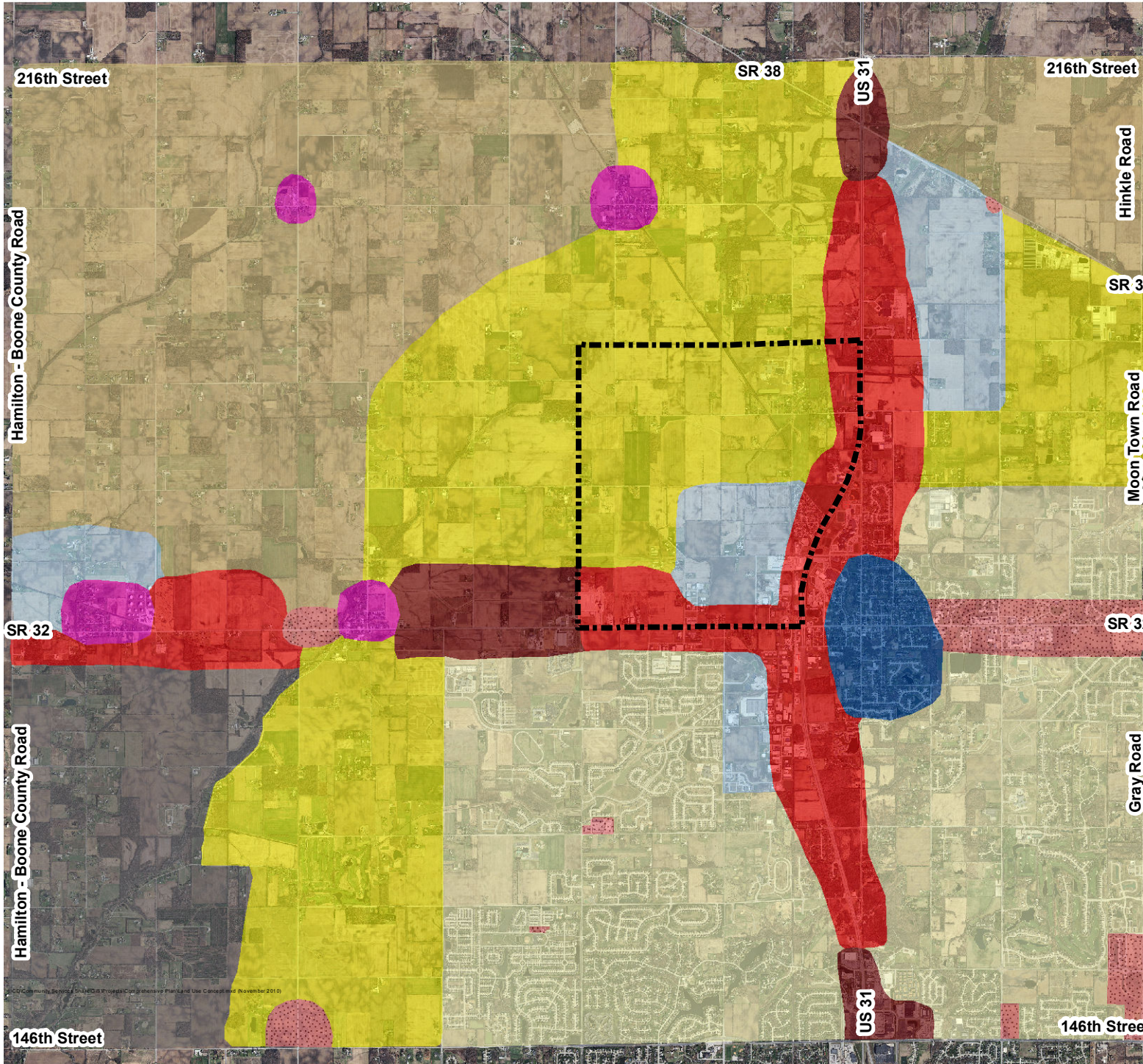
- The Scope of Sports Subcommittee of the Sports Commission determined that the sports to be initially offered within the Sports Campus should be selected based on demand, mission, stakeholders, cost and the ability of the Sports Campus to conduct multiple sports on fields designed to accommodate a variety of sport uses.
- The Sports Commission identified that the following field sports meet the requirements identified in the paragraph above soccer, football, lacrosse, rugby, field hockey, baseball, and softball; and, the following indoor training facility sports: all field and diamond sports with an emphasis on soccer, baseball and soccer league, travel and personal training use.
- The Location Subcommittee of the Sports Commission met with and exchanged information with developers several times during the Sports Capital siting process. The following primary criteria were used to identify the most appropriate location:
 - Site Access;
 - Suitability for contemplated sports;
 - Proximity to other city investment; and
 - Potential for economic development.
- The Sports Commission has recommended, unanimously, that the area identified in Exhibit A should be selected for the Sports Capital. This area is generally described as the land south of 196th Street, east of Spring Mill Road, north of State Road 32 and west of US Highway 31

Westfield - Washington Land Use Concept Map

Exhibit A

Legend

-  Suburban Residential
-  New Suburban
-  Existing Rural Southwest
-  Rural Northwest and Northeast
-  Business Park
-  Local Commercial
-  Employment Corridor
-  Regional Commercial
-  Villages
-  Downtown
-  Family Sports Capital of America



Community Development Department

1 inch = 1 mile

DISCLAIMER: The Town of Westfield, Indiana has created this map in an attempt to increase the availability of public information and enhance public knowledge. The Town is continually collecting, maintaining and updating data. Information for the map themes was obtained from existing, and many times historical documentation. Because of this, the information displayed on this map is not guaranteed to be completely accurate or all inclusive. The Town of Westfield retains the right to change the content of this map without prior notice. The Town of Westfield assumes no liability for any actions or omissions that may result from persons viewing the information contained on this map. This map is not meant to take the place of any existing guidelines, rules, regulations or legal procedures. No information displayed on the map should be used in place of legal documentation. Field investigations are still necessary for locating underground facilities, and contact with appropriate departmental staff is still required for determining location-based re-designations.