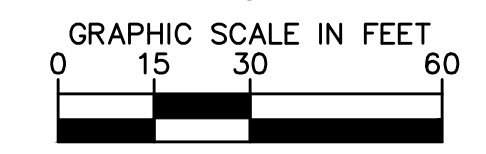


Drawing name: K:\IND_LDE\170125001_Patch_Development_Sanders Glen Senior Housing_Westfield_IN\2 Design\CADD\PlanSheets\170125001.C3.1 - SITE PLAN.dwg C3.1 Feb 12, 2020 4:22pm by Andy Taylor
This document, together with the concepts and designs presented herein, is intended only for the specific purpose and client for which it was prepared. Reuse of and improper reliance on this document without written authorization and adaptation by Kimley-Horn and Associates, Inc. shall be without liability to Kimley-Horn and Associates, Inc.

Indiana Utilities Protection Service

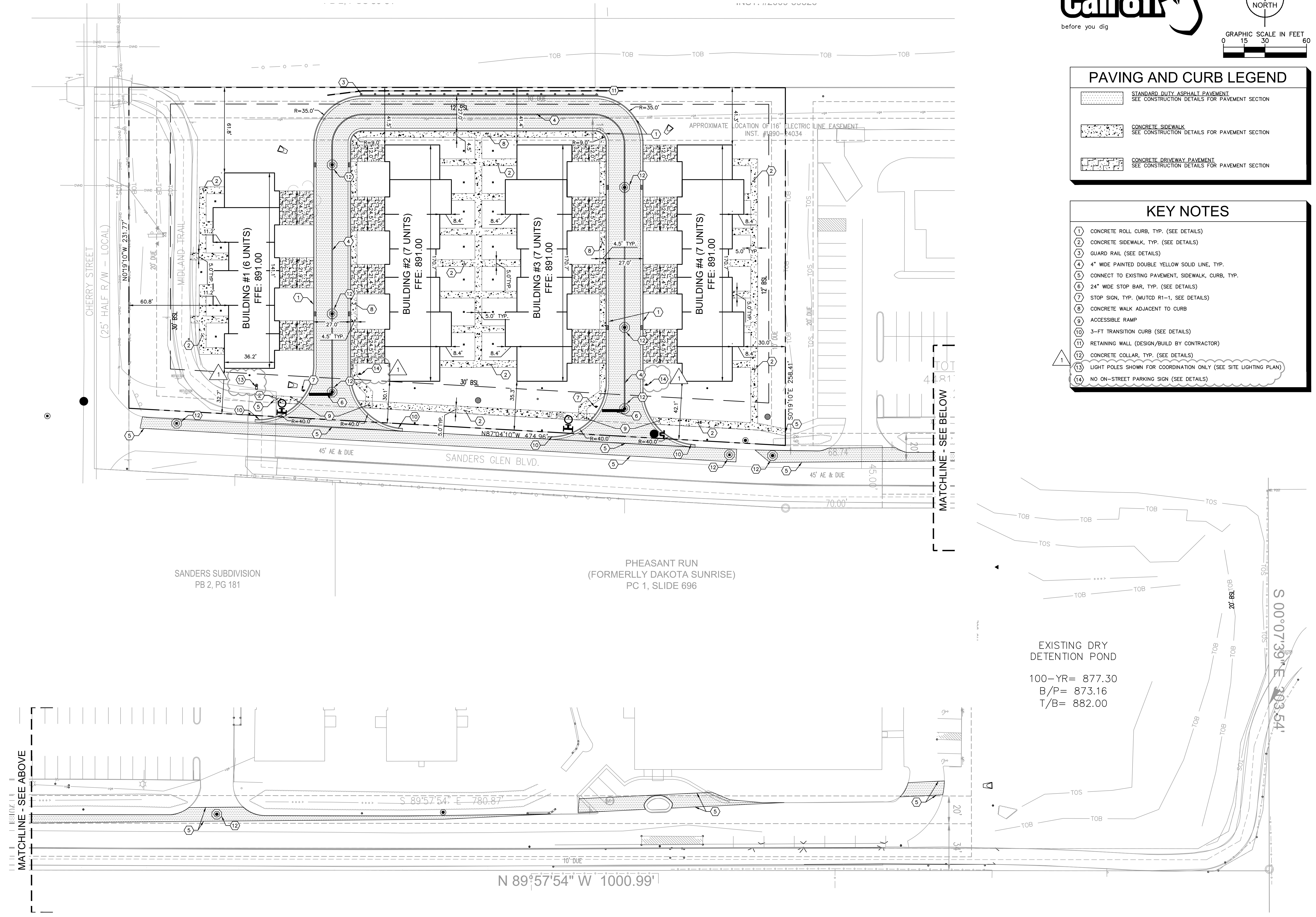


PAVING AND CURB LEGEND

	STANDARD DUTY ASPHALT PAVEMENT SEE CONSTRUCTION DETAILS FOR PAVEMENT SECTION
	CONCRETE SIDEWALK SEE CONSTRUCTION DETAILS FOR PAVEMENT SECTION
	CONCRETE DRIVEWAY PAVEMENT SEE CONSTRUCTION DETAILS FOR PAVEMENT SECTION

KEY NOTES

- (1) CONCRETE ROLL CURB, TYP. (SEE DETAILS)
- (2) CONCRETE SIDEWALK, TYP. (SEE DETAILS)
- (3) GUARD RAIL (SEE DETAILS)
- (4) 4" WIDE PAINTED DOUBLE YELLOW SOLID LINE, TYP.
- (5) CONNECT TO EXISTING PAVEMENT, SIDEWALK, CURB, TYP.
- (6) 24" WIDE STOP BAR, TYP. (SEE DETAILS)
- (7) STOP SIGN, TYP. (MUTCD R1-1, SEE DETAILS)
- (8) CONCRETE WALK ADJACENT TO CURB
- (9) ACCESSIBLE RAMP
- (10) 3-FT TRANSITION CURB (SEE DETAILS)
- (11) RETAINING WALL (DESIGN/BUILD BY CONTRACTOR)
- (12) CONCRETE COLLAR, TYP. (SEE DETAILS)
- (13) LIGHT POLES SHOWN FOR COORDINATION ONLY (SEE SITE LIGHTING PLAN)
- (14) NO ON-STREET PARKING SIGN (SEE DETAILS)



SCALE: AS NOTED	Kimley-Horn		DESIGNED BY: DAM		DRAWN BY: KIL		KIL
© 2020 KIMLEY-HORN AND ASSOCIATES, INC. 250 EAST 96TH STREET, SUITE 580, INDIANAPOLIS, IN 46240 WWW.KIMLEY-HORN.COM PH: 317.588.4660 FAX: 317.588.4660		REVIEW COMMENTS		DATE		BY	
CHECKED BY: ART		REVISIONS		02/12/20		KIL	
		patch development		SITE PLAN		SANDERS GLEN GARDEN HOMES	
ORIGINAL ISSUE: 01/03/2019		KHA PROJECT NO. 170125001		SHEET NUMBER		C3.1	